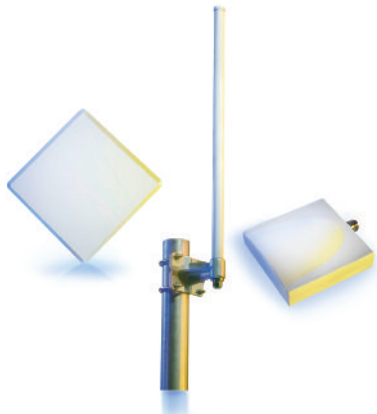




ORiNOCO Family of Antennas for Public Safety



APPLICATIONS

- Increase connection reliability and improve range – omnidirectional antennas
- AP-to-AP connectivity – directional antennas for both 802.11a and 4.9 GHz Public Safety band

Complete your ORiNOCO WLAN solution

Proxim understands that deploying a wireless LAN means not only having the best enterprise-class access point, but also the right antennas, cables and other accessories to complete your installation. Proxim offers a comprehensive range of options to choose from for a wide range of environments.

Optimize your wireless LAN coverage

The ORiNOCO family of antennas deliver flexible, cost-effective solutions for extending the range of your public safety network in a variety of situations. For aesthetic or tamper-prevention reasons, Access Points are often installed above the ceiling, in closed wiring closets or must be mounted in obstructed locations to easily access the Ethernet LAN. Other installations present challenges due to the physical layout of the facility or other buildings that have long, narrow corridors. And, for a few installation types, multipath issues can occur.

A wide range of choices

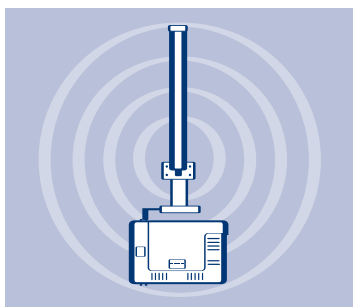
The ORiNOCO family of antennas includes both omnidirectional and directional antennas that can be used to overcome obstacles by being placed in a

location that optimizes wireless LAN coverage. For Access Points mounted above ceilings or within wiring closets, antennas can be brought out to provide excellent RF coverage. Long, narrow corridors can be cost-effectively covered by using directional antennas, which reduces the number of required access points, translating into significant cost savings.

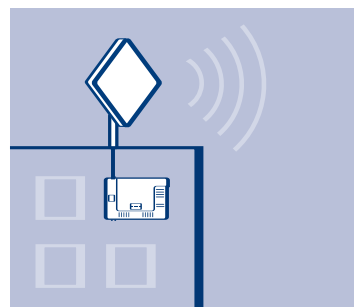
ORiNOCO antennas are available for use in the 4.9 GHz public safety band and in the 5 GHz band for 802.11a support. Proxim offers everything you need to get reliable, robust, wireless access up and running throughout your application.

Features

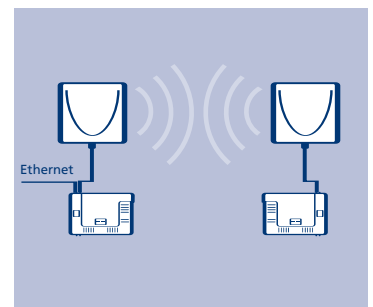
- Omnidirectional and directional antennas
- Support for 4.9 GHz and 5 GHz for investment protection
- Certified for use with the ORiNOCO AP-4900M
- Attached cable or optional cable available to extend antenna outside of ceiling or other obstructed environments
- Wall, ceiling and pole mount options



AP-4900 with Omnidirectional antenna



AP-4900 with directional antenna



AP-4900 in AP-to-AP communication configuration with directional antennas

ORiNOCO AP-4900M Antenna Specifications

ANTENNA	4.9 to 5.2 GHz Omni, 8dBi	4.9 to 5.0 GHz Omni, 10 dBi	4.9 to 5.8 GHz Panel, 10 dBi	4.9 to 5.0 GHz Panel, 21 dBi
ANTENNA TYPE	Omni-Directional	Omni-Directional	Directional	Directional
PEAK GAIN*	8 dBi	10 dBi	10 dBi	21 dBi
VSWR	2.0:1 Max	1.7:1 Max	2.0:1 Max	1.7:1 Max
POLARIZATION	Linear, Vertical	Linear, Vertical	Linear, Vertical	Linear
HPBW/HORIZONTAL	360 degrees	360 degrees	45 degrees max	10 degrees
HPBW/VERTICAL	12 degrees	7 degrees	45 degrees max	12 degrees
DOWNTILT	0 degrees	2 degrees	0 degrees	0 degrees
POWER HANDLING	5W (cw)	5W (cw)	2W (cw)	1W
IMPEDANCE	50 Ohms	50 Ohms	50 Ohms	50 Ohms
CONNECTOR	N jack	N jack	N jack	N jack
FRONT TO BACK RATIO	N/A	N/A	15 dB	30 dB
TEMPERATURE	-40°C to +80°C	-40°C to +80°C	-40°C to +80°C	-40°C to +80°C
HUMIDITY	95% @ 25°C	95% @ 25°C	95% @ 25°C	95% @ 25°C
RADOME COLOR	Gray-white	Gray-white	Light gray	Gray-white
RADOME MATERIAL	Fiberglass	Fiberglass, UV resistant	ABS	PC, UV resistant
WEIGHT	8 oz	9.34 oz	3.77 oz	42.33 oz
DIMENSIONS	3.14 x 3.07 x 14.68 inches	3.14 x 3.07 x 20.11 inches	3.14 x 3.07 x 14.68 inches	3.14 x 3.07 x 14.68 inches
PART #	1086-OA49-8	1086-OA49-10	1086-PA49-10	1086-PA49-21
APs CERTIFIED	AP-4900M	AP-4900M	AP-4900M	AP-4900M

* Including cable loss, if applicable