



AXIS Rack Solution

More video servers in less space – quick, flexible and professional installation and service

The AXIS Video Server Rack is a 19" rack solution that can be used to mount a large number of video servers (typically serving 15-20 cameras and upwards) with a common power supply, providing a space-efficient solution.

The Axis rack solution combines high reliability and functionality with quick, flexible and professional installation. Designed for improved serviceability and quick replacement of units, the rack holds up to 12 interchangeable and hot-swappable blades, so there is no need for power-down during installation or service.

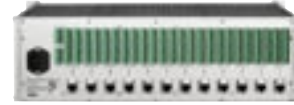
The Axis rack solution is designed for applications involving large number of cameras, both existing and new systems. It is also ideal for applications handling large physical surveillance areas such as prisons, airports, large buildings, university campuses and bus, subway and railway stations.



- Quick and professional installation of various video servers in the same rack
- Expandable system, simply by adding blades and wiring up
- Integrated power supply, for easy installation/expansion, and easy addition of back-up power solutions
- Higher density of video channels compared to stand alone solution
- Improved serviceability and trouble-free unit replacement



AXIS Video Server Rack



Hardware & System

- Aluminum rack, 19" / 3U
- Available slots: 12 (support hot swap)

Connections

- Video: Analog video input/s (BNC)¹
- Power: 100-240 VAC, 50/60 Hz, 1.6 A

Each slot contains the following connectors on the rear of the rack:

- Network: 10Base-T/100Base-TX Ethernet networks (RJ-45)
- Serial communication: RS-232 & RS-485 (terminal block)
- I/O: alarm inputs and outputs (terminal block)²

Operating Conditions

- Temp: 5 - 50 °C (41-122 °F)³
- Humidity: 20 - 80% RHG

Dimensions and Weight

- Height: 132 mm (5.2")
- Width: 482 mm (19.0")
- Depth: 300 mm (11.8")
- Weight: 3.3 kg (7.3 pounds)(incl. PSU)

Shipping contains

- Video server rack
- Power supply module (installed)
- Blanking panels (installed)
- Connector kit
- Mains cable
- Installation guide

Approvals

- EMC:
 - CE compliant according to:
 - + EN55024:1998 +A1
 - + EN61000-6-1:2001
 - + EN61000-6-2:2001
 - + EN55022:1998 +A1 Class B
 - + EN61000-3-2:2000
 - + EN61000-3-3:1995 +A1
 - FCC Part 15 subpart B, demonstrated by compliance with EN55022:1998
 - VCCI:2002 Class B ITE
 - C-tick AS/NZS 3548
- Safety
 - EN60950

1. Video input(s) are located on the blade
2. Number of inputs and outputs varies between different types of Blade.
3. Ensure proper ventilation/cooling when installing multiple racks.

AXIS Blade Video Servers



The following Blade Video Servers are available. Further information will be found in the respective video server datasheet. Functionality of a blade server is exactly the same as the stand alone version of the video server.

Each blade is shipped with connector kit, installation guide for video server rack and the respective video server manual.



Product Selection Guide								
Product	No. of channels	Video compression	Total Frame Rate (NTSC/PAL)	Video Motion Detection	Alarm inputs/outputs	PTZ support	HTTPS	Audio support
240Q Blade	4	Motion JPEG	24/20	Yes	4 / 4	Yes	Yes	No
241Q Blade	4	Motion JPEG/MPEG-4	120/100	Yes	4 / 4	Yes	Yes	No
241S Blade	1	Motion JPEG/MPEG-4	30/25	Yes	4 / 4	Yes	Yes	No
250S Blade	1	MPEG-2	30/25	No	4 / 1	Yes	No	Yes
2400+ Blade	4	Motion JPEG	30/25	No	4 / 1	Yes	No	Yes*
2401+ Blade	1	Motion JPEG	30/25	No	4 / 1	Yes	No	Yes*

* Requires the AXIS 2191 Audio Module

NOTE: Please see separate datasheets for all stand-alone video servers.

AIRLINX Communications, Inc.
 Box 253
 Greenville, NH 03048
 E-mail: sales@airlinx.com
 Tel: (888) 224-6814
 Fax: (603) 878-0530

©2005, Axis Communications AB. The Axis logo is a registered trademark of Axis Communications AB. All other company names and products are trademarks or registered trademarks of their respective companies. We reserve the right to introduce modifications without notice.

